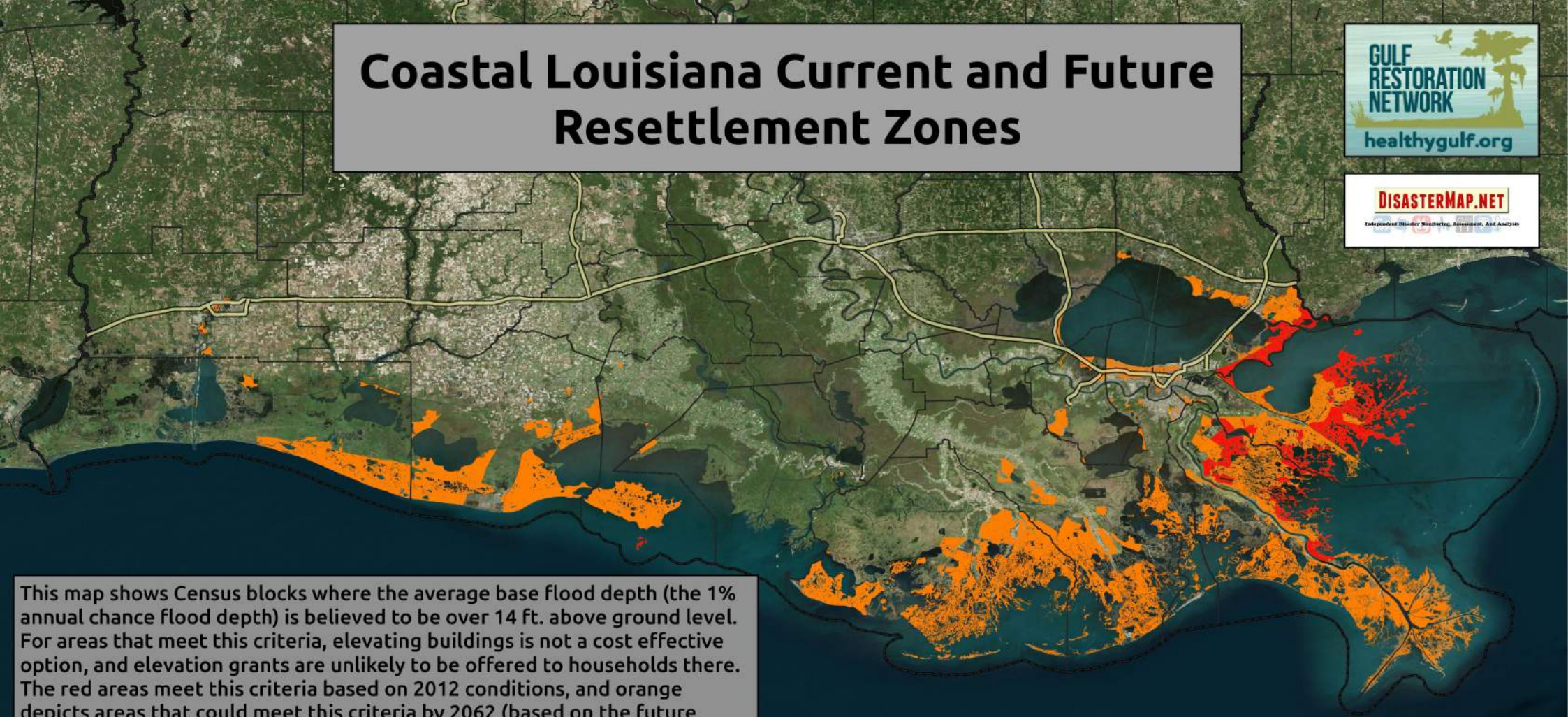


Coastal Louisiana Current and Future Resettlement Zones



This map shows Census blocks where the average base flood depth (the 1% annual chance flood depth) is believed to be over 14 ft. above ground level. For areas that meet this criteria, elevating buildings is not a cost effective option, and elevation grants are unlikely to be offered to households there. The red areas meet this criteria based on 2012 conditions, and orange depicts areas that could meet this criteria by 2062 (based on the future without action, least optimistic scenario). The table lists the total population and total number of houses in these areas.

Flood depth data provided by the Louisiana Coastal Protection and Restoration Authority and is based on the analysis conducted for the 2012 Coastal Master Plan. A full description of the data along with limitations and uncertainties can be obtained from 2012 Coastal Master Plan technical appendices (specifically the Surge/Wave and Risk Assessment Modeling Reports), which can be downloaded here: <http://coastal.la.gov/a-common-vision/2012-coastal-master-plan/cmp-appendices/>

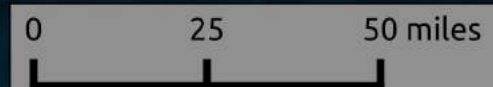
Population and housing data from 2010 US Census Summary File 1.

Coordinate Reference System: NAD83

Scenario	2012	2062
People in Resettlement Zone	1,940	357,591
Houses in Resettlement Zone	1,036	116,319

Legend

- Parish Outlines
- Base Flood Depth over 14 ft (2012)
- Base Flood Depth over 14 ft (2062)
- Base Imagery from Bing



Belle Chasse, Alliance, and Braithwaite Current and Future Resettlement Zones



Legend

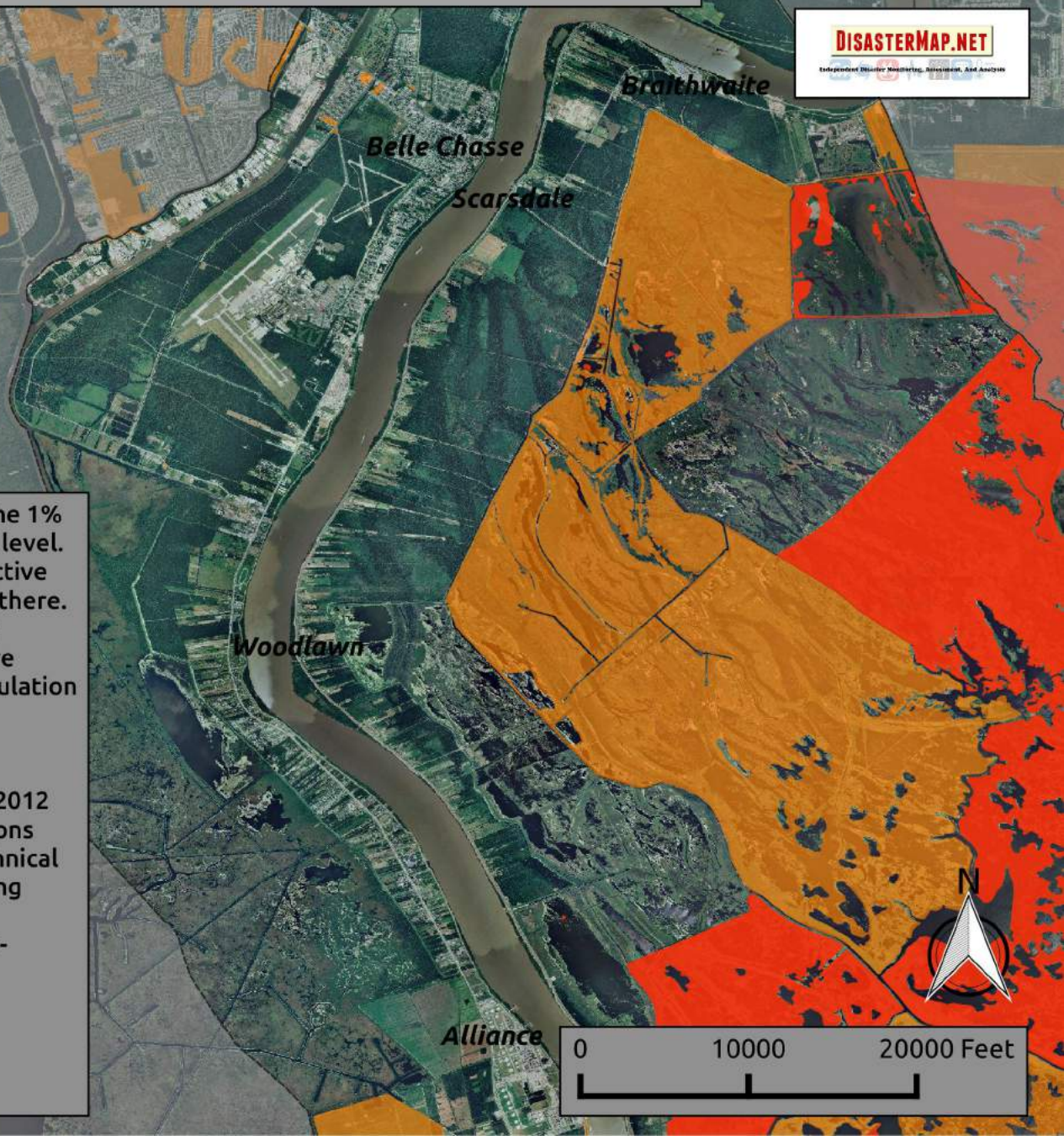
- Parish Outlines
- Base Flood Depth over 14 ft (2012)
- Base Flood Depth over 14 ft (2062)
- Base Imagery from Bing

This map shows Census blocks where the average base flood depth (the 1% annual chance flood depth) is believed to be over 14 ft. above ground level. For areas that meet this criteria, elevating buildings is not a cost effective option, and elevation grants are unlikely to be offered to households there. The red areas meet this criteria based on 2012 conditions, and orange depicts areas that could meet this criteria by 2062 (based on the future without action, least optimistic scenario). The table lists the total population and total number of houses in these areas.

Flood depth data provided by the Louisiana Coastal Protection and Restoration Authority and is based on the analysis conducted for the 2012 Coastal Master Plan. A full description of the data along with limitations and uncertainties can be obtained from 2012 Coastal Master Plan technical appendices (specifically the Surge/Wave and Risk Assessment Modeling Reports), which can be downloaded here: <http://coastal.la.gov/a-common-vision/2012-coastal-master-plan/cmp-appendices/>

Population and housing data from 2010 US Census Summary File 1.

Coordinate Reference System: NAD83



Empire and Port Sulphur Current and Future Resettlement Zones



Legend

- Parish Outlines
- Base Flood Depth over 14 ft (2012)
- Base Flood Depth over 14 ft (2062)
- Base Imagery from Bing

This map shows Census blocks where the average base flood depth (the 1% annual chance flood depth) is believed to be over 14 ft. above ground level. For areas that meet this criteria, elevating buildings is not a cost effective option, and elevation grants are unlikely to be offered to households there. The red areas meet this criteria based on 2012 conditions, and orange depicts areas that could meet this criteria by 2062 (based on the future without action, least optimistic scenario). The table lists the total population and total number of houses in these areas.

Flood depth data provided by the Louisiana Coastal Protection and Restoration Authority and is based on the analysis conducted for the 2012 Coastal Master Plan. A full description of the data along with limitations and uncertainties can be obtained from 2012 Coastal Master Plan technical appendices (specifically the Surge/Wave and Risk Assessment Modeling Reports), which can be downloaded here: <http://coastal.la.gov/a-common-vision/2012-coastal-master-plan/cmp-appendices/>

Population and housing data from 2010 US Census Summary File 1.

Coordinate Reference System: NAD83



0 10000 20000 Feet



Houma and Thibodaux Current and Future Resettlement Zones



Legend

- Parish Outlines
- Base Flood Depth over 14 ft (2012)
- Base Flood Depth over 14 ft (2062)
- Base Imagery from Bing

This map shows Census blocks where the average base flood depth (the 1% annual chance flood depth) is believed to be over 14 ft. above ground level. For areas that meet this criteria, elevating buildings is not a cost effective option, and elevation grants are unlikely to be offered to households there. The red areas meet this criteria based on 2012 conditions, and orange depicts areas that could meet this criteria by 2062 (based on the future without action, least optimistic scenario). The table lists the total population and total number of houses in these areas.

Flood depth data provided by the Louisiana Coastal Protection and Restoration Authority and is based on the analysis conducted for the 2012 Coastal Master Plan. A full description of the data along with limitations and uncertainties can be obtained from 2012 Coastal Master Plan technical appendices (specifically the Surge/Wave and Risk Assessment Modeling Reports), which can be downloaded here: <http://coastal.la.gov/a-common-vision/2012-coastal-master-plan/cmp-appendices/>

Population and housing data from 2010 US Census Summary File 1.

Coordinate Reference System: NAD83

Thibodaux

Schriever

Theriot

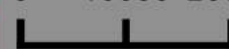
Houma

Point-Aux-Chenes

Theriot



0 10000 20000 Feet



Myrtle Grove and Pointe la Hache Current and Future Resettlement Zones

GULF
RESTORATION
NETWORK

healthygulf.org

DISASTERMAP.NET

Independent Disaster Mapping, Assessment, and Analysis

Legend

Parish Outlines

Base Flood Depth over 14 ft (2012)

Base Flood Depth over 14 ft (2062)

Base Imagery from Bing

This map shows Census blocks where the average base flood depth (the 1% annual chance flood depth) is believed to be over 14 ft. above ground level. For areas that meet this criteria, elevating buildings is not a cost effective option, and elevation grants are unlikely to be offered to households there. The red areas meet this criteria based on 2012 conditions, and orange depicts areas that could meet this criteria by 2062 (based on the future without action, least optimistic scenario). The table lists the total population and total number of houses in these areas.

Flood depth data provided by the Louisiana Coastal Protection and Restoration Authority and is based on the analysis conducted for the 2012 Coastal Master Plan. A full description of the data along with limitations and uncertainties can be obtained from 2012 Coastal Master Plan technical appendices (specifically the Surge/Wave and Risk Assessment Modeling Reports), which can be downloaded here: <http://coastal.la.gov/a-common-vision/2012-coastal-master-plan/cmp-appendices/>

Population and housing data from 2010 US Census Summary File 1.

Coordinate Reference System: NAD83

Myrtle Grove

Pointe la Hache

Port Sulphur



0 10000 20000 Feet

New Orleans, Kenner, and Metairie Current and Future Resettlement Zones



Legend

Parish Outlines

Base Flood Depth over 14 ft (2012)

Base Flood Depth over 14 ft (2062)

Base Imagery from Bing

This map shows Census blocks where the average base flood depth (the 1% annual chance flood depth) is believed to be over 14 ft. above ground level. For areas that meet this criteria, elevating buildings is not a cost effective option, and elevation grants are unlikely to be offered to households there. The red areas meet this criteria based on 2012 conditions, and orange depicts areas that could meet this criteria by 2062 (based on the future without action, least optimistic scenario). The table lists the total population and total number of houses in these areas.

Flood depth data provided by the Louisiana Coastal Protection and Restoration Authority and is based on the analysis conducted for the 2012 Coastal Master Plan. A full description of the data along with limitations and uncertainties can be obtained from 2012 Coastal Master Plan technical appendices (specifically the Surge/Wave and Risk Assessment Modeling Reports), which can be downloaded here: <http://coastal.la.gov/a-common-vision/2012-coastal-master-plan/cmp-appendices/>

Population and housing data from 2010 US Census Summary File 1.

Coordinate Reference System: NAD83

Kenner

Metairie

New Orleans



0 10000 20000 Feet



New Orleans East Current and Future Resettlement Zones



Legend

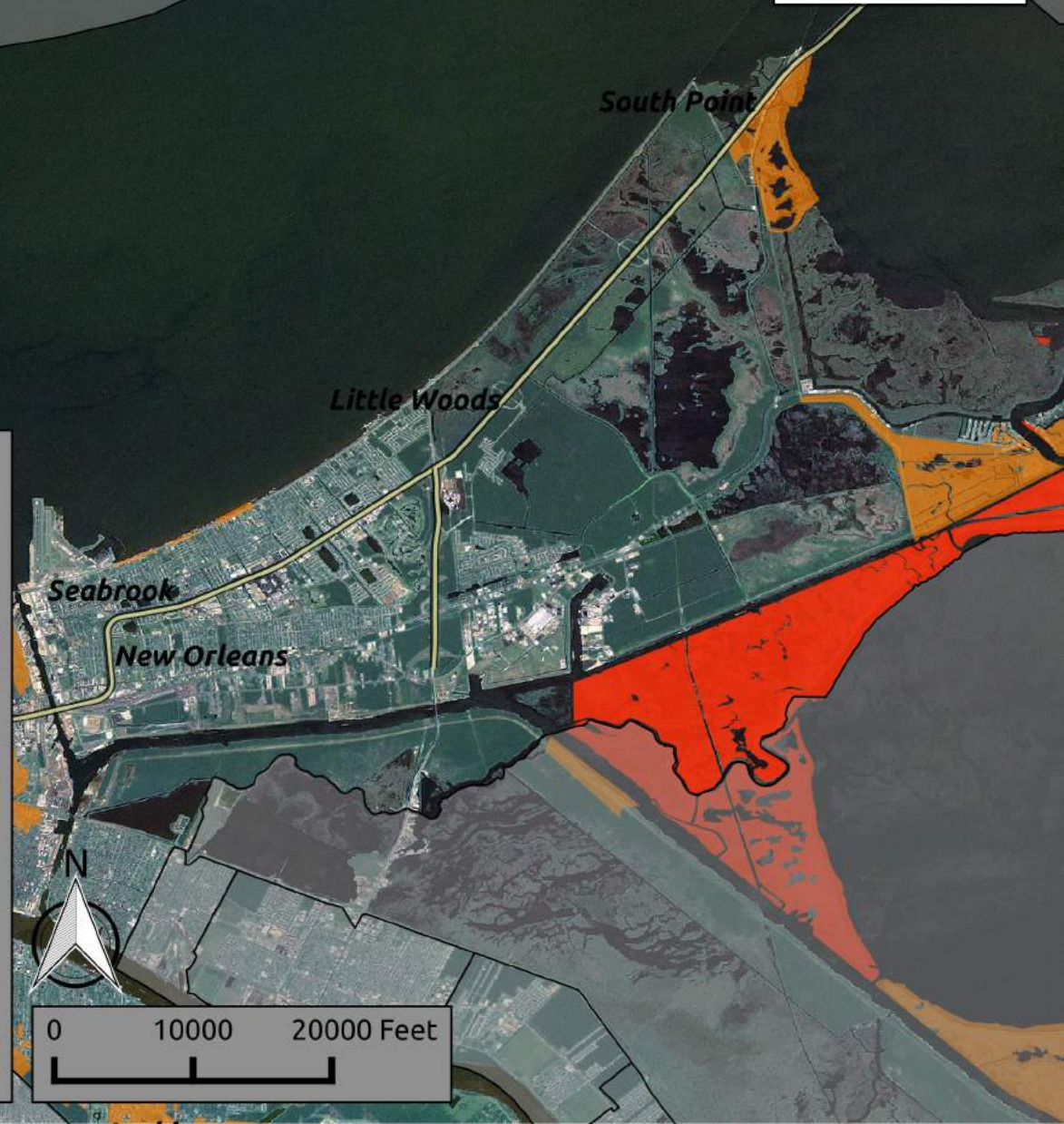
- Parish Outlines
- Base Flood Depth over 14 ft (2012)
- Base Flood Depth over 14 ft (2062)
- Base Imagery from Bing

This map shows Census blocks where the average base flood depth (the 1% annual chance flood depth) is believed to be over 14 ft. above ground level. For areas that meet this criteria, elevating buildings is not a cost effective option, and elevation grants are unlikely to be offered to households there. The red areas meet this criteria based on 2012 conditions, and orange depicts areas that could meet this criteria by 2062 (based on the future without action, least optimistic scenario). The table lists the total population and total number of houses in these areas.

Flood depth data provided by the Louisiana Coastal Protection and Restoration Authority and is based on the analysis conducted for the 2012 Coastal Master Plan. A full description of the data along with limitations and uncertainties can be obtained from 2012 Coastal Master Plan technical appendices (specifically the Surge/Wave and Risk Assessment Modeling Reports), which can be downloaded here: <http://coastal.la.gov/a-common-vision/2012-coastal-master-plan/cmp-appendices/>

Population and housing data from 2010 US Census Summary File 1.

Coordinate Reference System: NAD83



New Orleans East Landbridge Current and Future Resettlement Zones



Legend

- Parish Outlines
- Base Flood Depth over 14 ft (2012)
- Base Flood Depth over 14 ft (2062)
- Base Imagery from Bing

This map shows Census blocks where the average base flood depth (the 1% annual chance flood depth) is believed to be over 14 ft. above ground level. For areas that meet this criteria, elevating buildings is not a cost effective option, and elevation grants are unlikely to be offered to households there. The red areas meet this criteria based on 2012 conditions, and orange depicts areas that could meet this criteria by 2062 (based on the future without action, least optimistic scenario). The table lists the total population and total number of houses in these areas.

Flood depth data provided by the Louisiana Coastal Protection and Restoration Authority and is based on the analysis conducted for the 2012 Coastal Master Plan. A full description of the data along with limitations and uncertainties can be obtained from 2012 Coastal Master Plan technical appendices (specifically the Surge/Wave and Risk Assessment Modeling Reports), which can be downloaded here: <http://coastal.la.gov/a-common-vision/2012-coastal-master-plan/cmp-appendices/>

Population and housing data from 2010 US Census Summary File 1.

Coordinate Reference System: NAD83



0 10000 20000 Feet

Orleans Parish Current and Future Resettlement Zones

GULF
RESTORATION
NETWORK

healthygulf.org

DISASTERMAP.NET

Independent Disaster Monitoring, Assessment, and Analysis

Scenario	2012	2062
People in Resettlement Zone	21	92,560
Houses in Resettlement Zone	12	49,674

Legend

Parish Outlines

Base Flood Depth over 14 ft (2012)

Base Flood Depth over 14 ft (2062)

Base Imagery from Bing

This map shows Census blocks where the average base flood depth (the 1% annual chance flood depth) is believed to be over 14 ft. above ground level. For areas that meet this criteria, elevating buildings is not a cost effective option, and elevation grants are unlikely to be offered to households there. The red areas meet this criteria based on 2012 conditions, and orange depicts areas that could meet this criteria by 2062 (based on the future without action, least optimistic scenario). The table lists the total population and total number of houses in these areas.

Flood depth data provided by the Louisiana Coastal Protection and Restoration Authority and is based on the analysis conducted for the 2012 Coastal Master Plan. A full description of the data along with limitations and uncertainties can be obtained from 2012 Coastal Master Plan technical appendices (specifically the Surge/Wave and Risk Assessment Modeling Reports), which can be downloaded here: <http://coastal.la.gov/a-common-vision/2012-coastal-master-plan/cmp-appendices/>

Population and housing data from 2010 US Census Summary File 1.

Coordinate Reference System: NAD83



Plaquemines Parish Current and Future Resettlement Zones



Scenario	2012	2062
People in Resettlement Zone	425	5,984
Houses in Resettlement Zone	187	2,793

Legend

Parish Outlines

Base Flood Depth over 14 ft (2012)

Base Flood Depth over 14 ft (2062)

Base Imagery from Bing

This map shows Census blocks where the average base flood depth (the 1% annual chance flood depth) is believed to be over 14 ft. above ground level. For areas that meet this criteria, elevating buildings is not a cost effective option, and elevation grants are unlikely to be offered to households there. The red areas meet this criteria based on 2012 conditions, and orange depicts areas that could meet this criteria by 2062 (based on the future without action, least optimistic scenario). The table lists the total population and total number of houses in these areas.

Flood depth data provided by the Louisiana Coastal Protection and Restoration Authority and is based on the analysis conducted for the 2012 Coastal Master Plan. A full description of the data along with limitations and uncertainties can be obtained from 2012 Coastal Master Plan technical appendices (specifically the Surge/Wave and Risk Assessment Modeling Reports), which can be downloaded here: <http://coastal.la.gov/a-common-vision/2012-coastal-master-plan/cmp-appendices/>

Population and housing data from 2010 US Census Summary File 1.

Coordinate Reference System: NAD83



0 12.5 25 miles



Terrebonne Parish Current and Future Resettlement Zones



Scenario	2012	2062
People in Resettlement Zone	1	18,243
Houses in Resettlement Zone	1	6,915

Legend

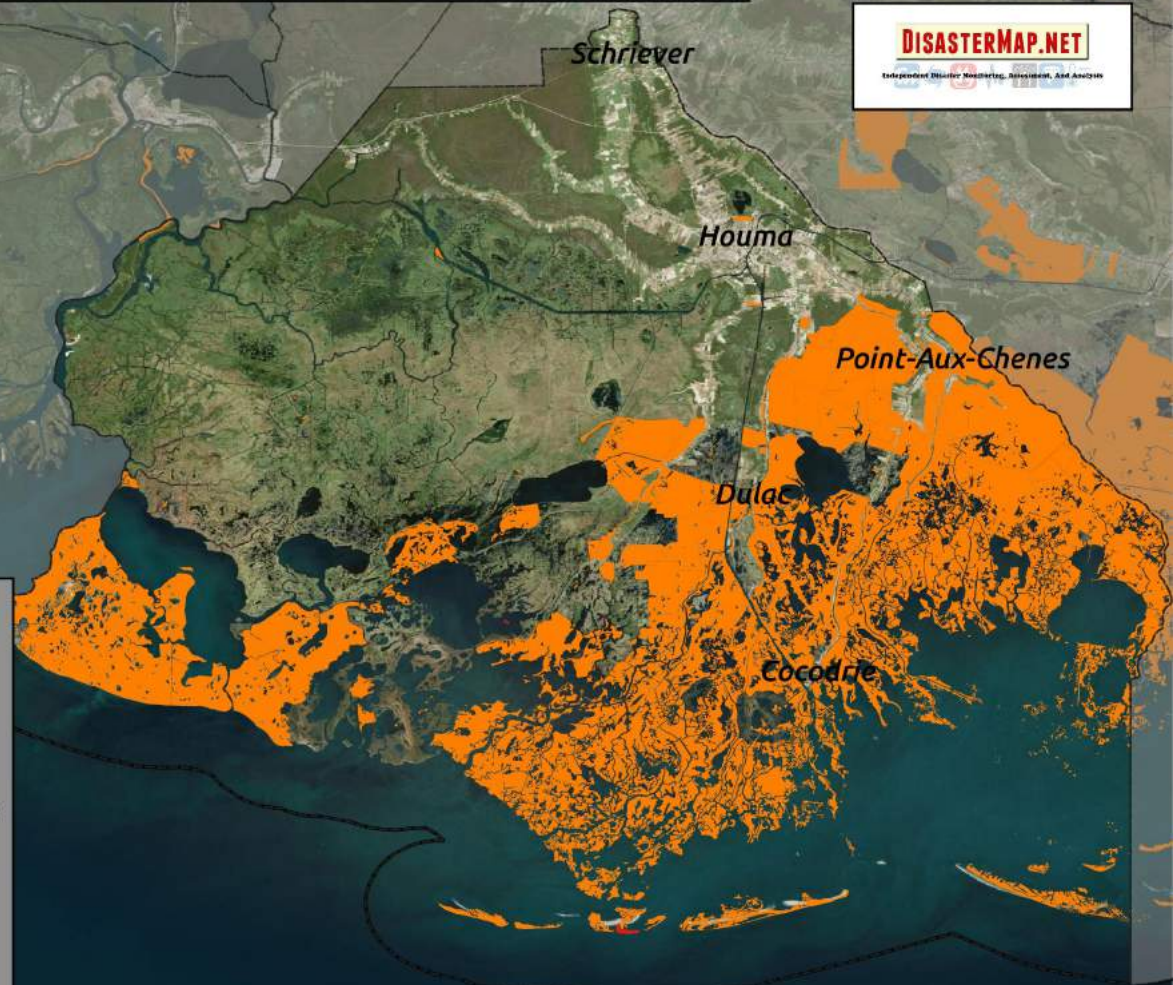
- Parish Outlines
- Base Flood Depth over 14 ft (2012)
- Base Flood Depth over 14 ft (2062)
- Base Imagery from Bing

This map shows Census blocks where the average base flood depth (the 1% annual chance flood depth) is believed to be over 14 ft. above ground level. For areas that meet this criteria, elevating buildings is not a cost effective option, and elevation grants are unlikely to be offered to households there. The red areas meet this criteria based on 2012 conditions, and orange depicts areas that could meet this criteria by 2062 (based on the future without action, least optimistic scenario). The table lists the total population and total number of houses in these areas.

Flood depth data provided by the Louisiana Coastal Protection and Restoration Authority and is based on the analysis conducted for the 2012 Coastal Master Plan. A full description of the data along with limitations and uncertainties can be obtained from 2012 Coastal Master Plan technical appendices (specifically the Surge/Wave and Risk Assessment Modeling Reports), which can be downloaded here: <http://coastal.la.gov/a-common-vision/2012-coastal-master-plan/cmp-appendices/>

Population and housing data from 2010 US Census Summary File 1.

Coordinate Reference System: NAD83



Theriot, Montegut, and Cocodrie Current and Future Resettlement Zones

GULF
RESTORATION
NETWORK

healthygulf.org

Bourq

DISASTERMAP.NET

Independent Disaster Mapping, Assessment, and Analysis

Legend

Parish Outlines

Base Flood Depth over 14 ft (2012)

Base Flood Depth over 14 ft (2062)

Base Imagery from Bing

This map shows Census blocks where the average base flood depth (the 1% annual chance flood depth) is believed to be over 14 ft. above ground level. For areas that meet this criteria, elevating buildings is not a cost effective option, and elevation grants are unlikely to be offered to households there. The red areas meet this criteria based on 2012 conditions, and orange depicts areas that could meet this criteria by 2062 (based on the future without action, least optimistic scenario). The table lists the total population and total number of houses in these areas.

Flood depth data provided by the Louisiana Coastal Protection and Restoration Authority and is based on the analysis conducted for the 2012 Coastal Master Plan. A full description of the data along with limitations and uncertainties can be obtained from 2012 Coastal Master Plan technical appendices (specifically the Surge/Wave and Risk Assessment Modeling Reports), which can be downloaded here: <http://coastal.la.gov/a-common-vision/2012-coastal-master-plan/cmp-appendices/>

Population and housing data from 2010 US Census Summary File 1.

Coordinate Reference System: NAD83



0 10000 20000 Feet



Buras, Triumph, Boothville, and Venice Current and Future Resettlement Zones



Legend

- Parish Outlines
- Base Flood Depth over 14 ft (2012)
- Base Flood Depth over 14 ft (2062)
- Base Imagery from Bing

This map shows Census blocks where the average base flood depth (the 1% annual chance flood depth) is believed to be over 14 ft. above ground level. For areas that meet this criteria, elevating buildings is not a cost effective option, and elevation grants are unlikely to be offered to households there. The red areas meet this criteria based on 2012 conditions, and orange depicts areas that could meet this criteria by 2062 (based on the future without action, least optimistic scenario). The table lists the total population and total number of houses in these areas.

Flood depth data provided by the Louisiana Coastal Protection and Restoration Authority and is based on the analysis conducted for the 2012 Coastal Master Plan. A full description of the data along with limitations and uncertainties can be obtained from 2012 Coastal Master Plan technical appendices (specifically the Surge/Wave and Risk Assessment Modeling Reports), which can be downloaded here: <http://coastal.la.gov/a-common-vision/2012-coastal-master-plan/cmp-appendices/>

Population and housing data from 2010 US Census Summary File 1.

Coordinate Reference System: NAD83



0 10000 20000 Feet